

# CARGO LASHING & LIFTING SYSTEMS



**UNILIFT EQUIPMENT & SALES**  
9 Astill Drive, Narrambla Business Park  
Orange, NSW 2800  
Australia

Phone: 61 (0)2 6360 3311 or 1800 193 608

Fax: 61 (0)2 6361 9903 or 1800 193 968

Email: [unilift@gotalk.net.au](mailto:unilift@gotalk.net.au)



## Company Profile

With the demanding needs from customers throughout Australasia, Unilift offers a state of the art electronic on-site lifting gear inspection service, enabling our customers to access their lifting gear registers 24/7 anywhere in the world.

Electronic Load cells are available for hire or purchase for on-site testing for on and off-shore purposes. We can assure our customers the latest technology is used to satisfy and comply and conform to industry standards.

Unilift can engineer, manufacture and certify any type of lifting device for any application. Our company works closely with our customers to ensure the product meets and satisfies their requirements.

We have recently introduced a division for manufacturing Wire Rope Spooling machines for the off-shore industry. A range of machines are available to handle all reel sizes. Our machines are fully hydraulic with constant tensioning available on all models. Powered either by electric power pack or diesel hydraulic. Whatever your requirements, we remain dedicated to providing the highest standard of products and services to all of our valued customers.

Unilift is an Australian family owned and operated Company established in 2001.

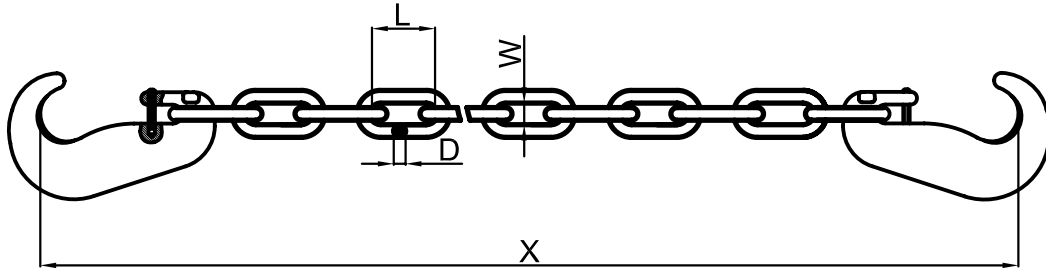
Recognised as a leading supplier and manufacturer of lifting, rigging and height safety gear, the company has developed a strong customer relationship based on quality, service and trust.

Unilift are continually expanding its operations to service our customers and have recently included a new 1000T capacity wire swaging machine.

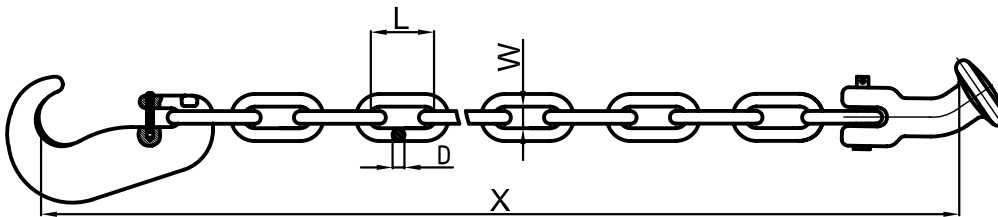
# A LASHING MATERIALS FOR RO-RO VESSEL

LASHING CHAIN	A-1
TENSION LEVER	A-2
CHAIN TURNBUCKLE	A-3
TURNBUCKLE	A-4
LASHING CHAIN FOR LUMBER	A-5
QUICK LASH	A-6
LASHING BELT	A-7
C HOOK FOR LASHING CHAIN	A-8
HOOKS/ SECURING PAD	A-9
ELEPHANT FOOT	A-10
D-RING & CLAMP	A-11
RAISED CLOVERLEAF	A-12
WHEEL CHOCK	A-13
DUNNAGE WOOD	A-14
EXTENSION HANDLE	A-15

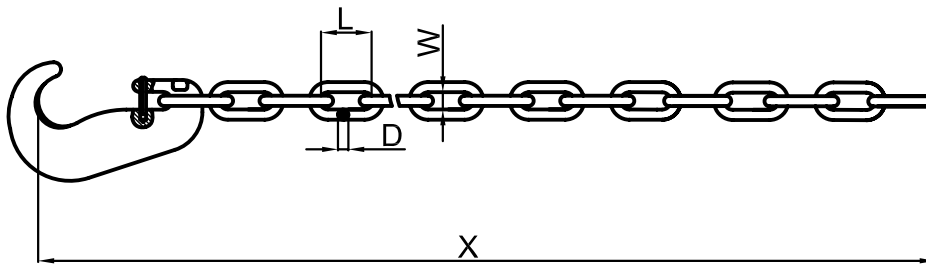
### Lashing chain with C HOOK / C HOOK C-1



### Lashing chain with C HOOK / EL FOOT C-1B



### Lashing chain with single C HOOK / C-1C



#### Specifications:

Classification: All items are approved by major classification societies

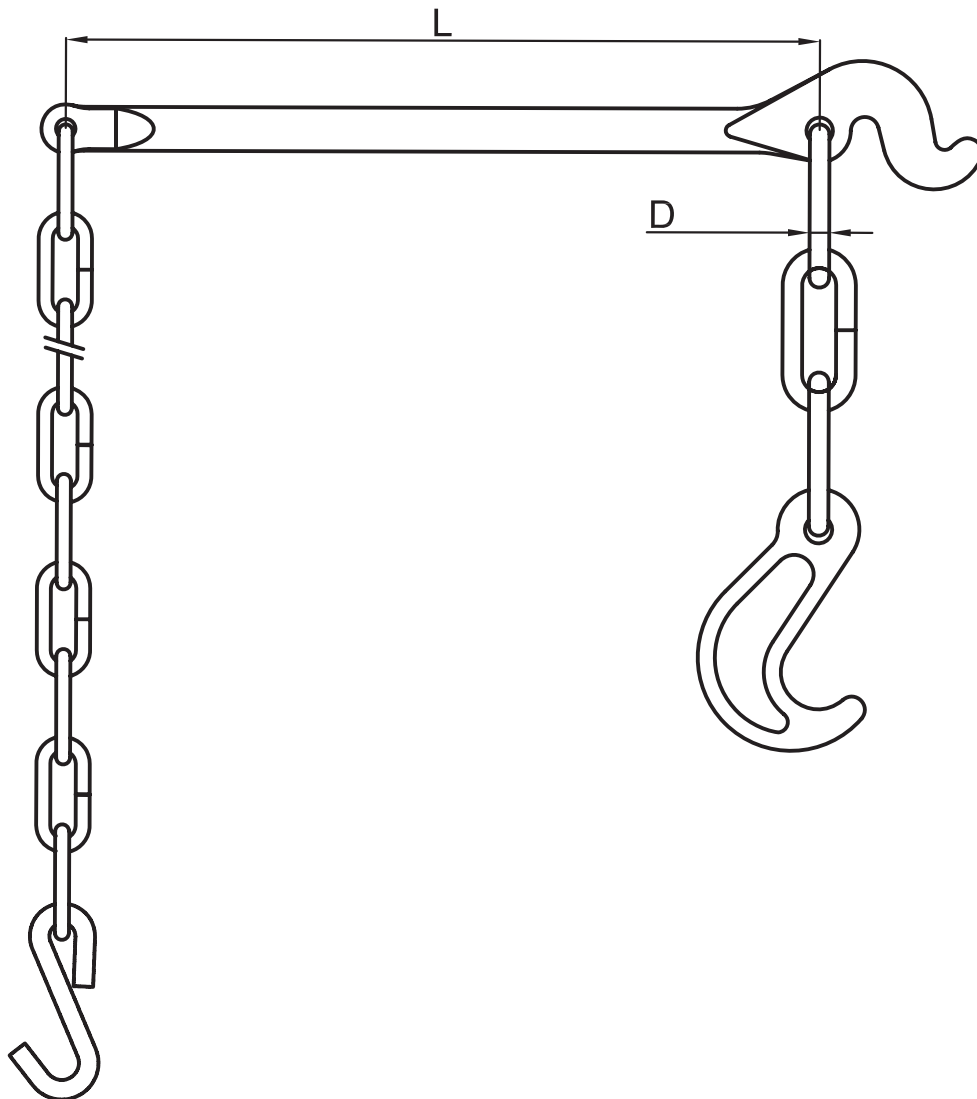
Materials: Forged steel & high tensile steel

Finish: Painted

Remark: Other dimensions, materials and finish upon request

DIA	L	W	B.L.	WEIGHT/M
13mm	80mm	22mm	200KN	3kg
11mm	65mm	20mm	150KN	2.2kg
9mm	56mm	15mm	100KN	1.6kg

### Tension lever round type C-2R



#### Specifications:

Classification: All items are approved by major classification societies

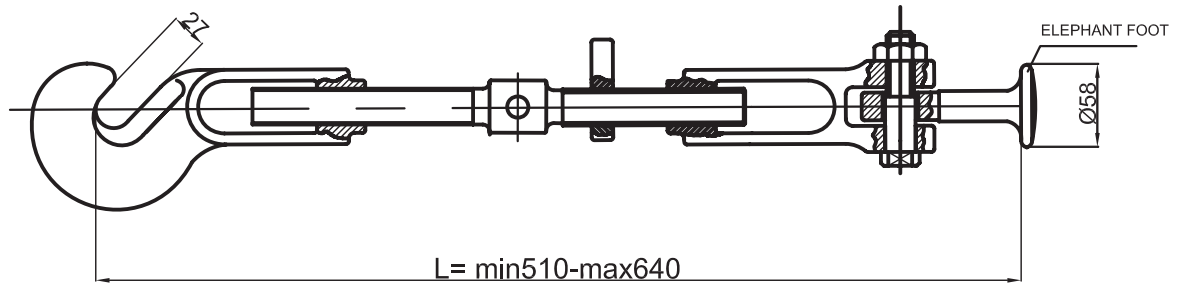
Materials: Forged steel & High tensile steel

Finish: Painted

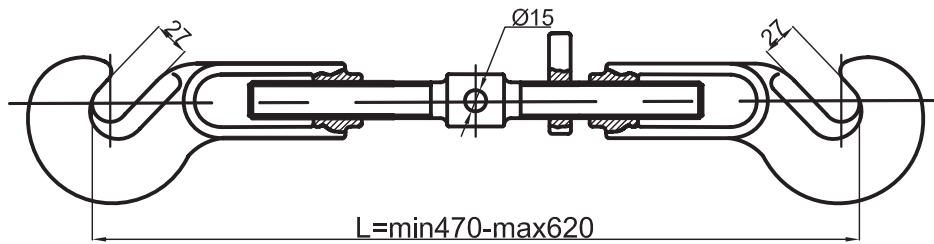
Remark: Other dimensions, materials and finish upon request

MODEL NO.	D	L	B.L.	WEIGHT
C-2R(13-E)	14mm	485	200KN	6kg
C-2R(11-E)	13mm	496	150KN	4.5kg
C-2R(9-E)	12mm	480	100KN	4kg

### Hook- el foot type B-61



### Hook - hook type B-62



#### Specifications:

Classification: All items are approved by major classification societies

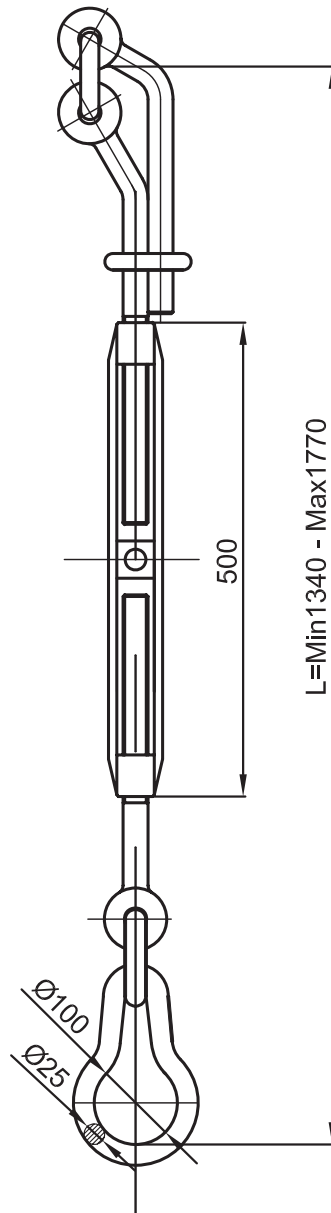
Materials: Forged steel & high tensile steel

Finish: Hot dipped galvanized

Remark: Other dimensions, materials and finish upon request

MODEL NO.	B.L.	WEIGHT
B-61	200KN	5.5kg
B-62		5.5kg

### Lumber turnbuckle B-51



#### Specifications:

Classification: All items are approved by major classification societies

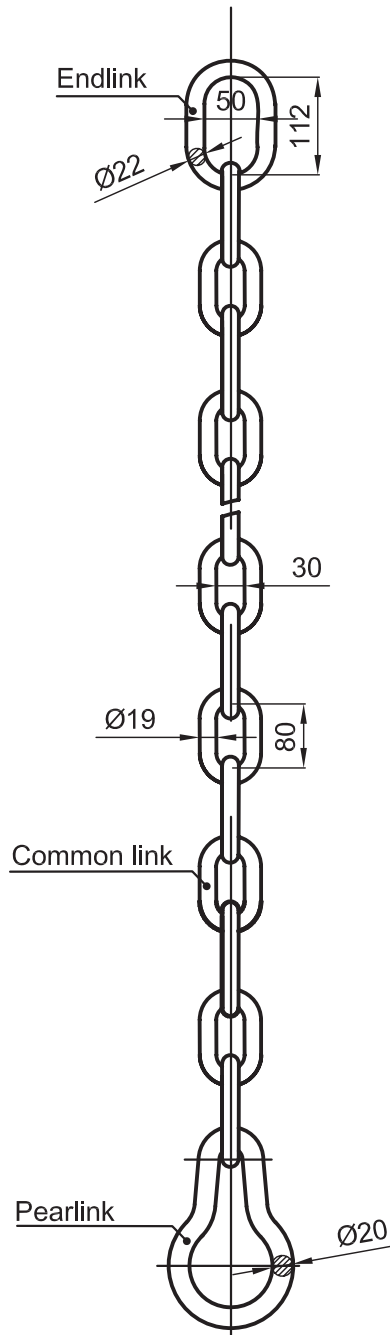
Materials: Forged steel & high tensile steel

Finish: Hot dipped galvanized

Remark: Other dimensions, materials and finish upon request

MODEL NO.	B.L.	WEIGHT
B-51	250KN	17kg

### Lashing Chain for Lumber C-5-X



#### Specifications:

Classification: All items are approved by major classification societies

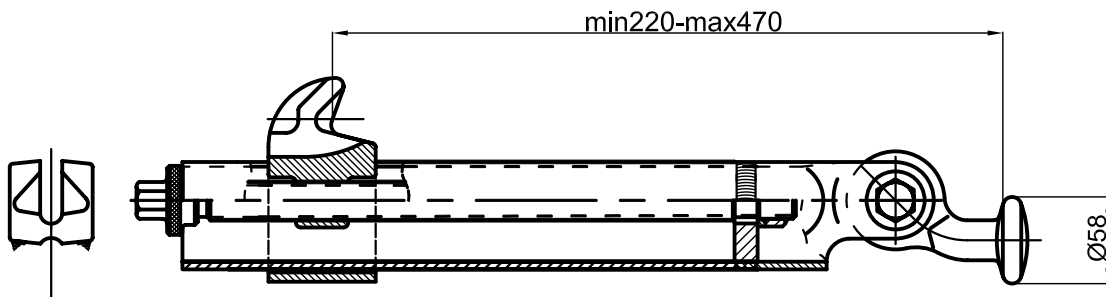
Materials: High tensile steel

Finish: Galvanized

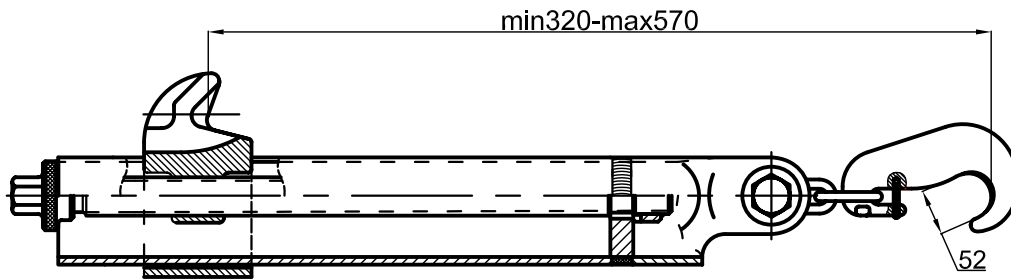
Remark: Other dimensions, materials and finish upon request

MODEL NO.	B.L.	FINISH
C-5-X	260KN	GALV

### El foot type B-71



### Hook type B-72



#### Specifications:

Classification: All items are approved by major classification societies

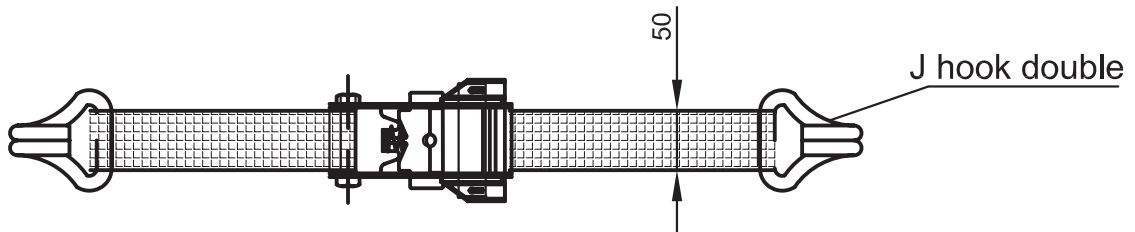
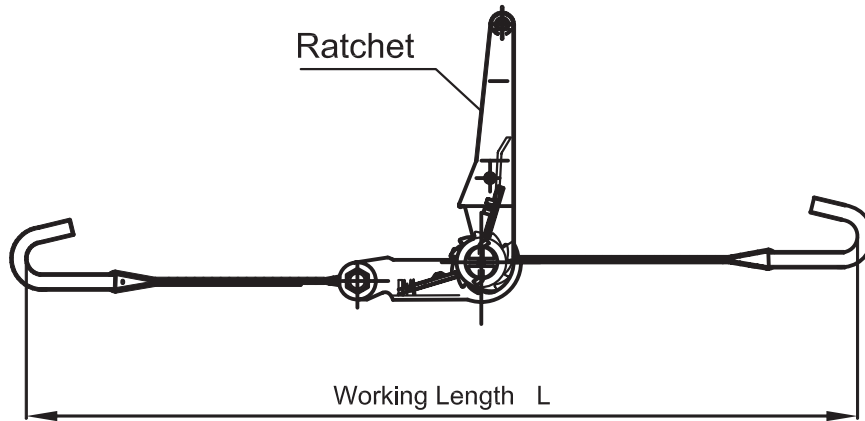
Materials: Forged steel & high tensile steel

Finish: Hot dipped galvanized

Remark: Other dimensions, materials and finish upon request

MODEL NO.	B.L.	WEIGHT
B-71	200KN	7kg
B-72		8kg

### Hook - hook type CW-1



### Specifications:

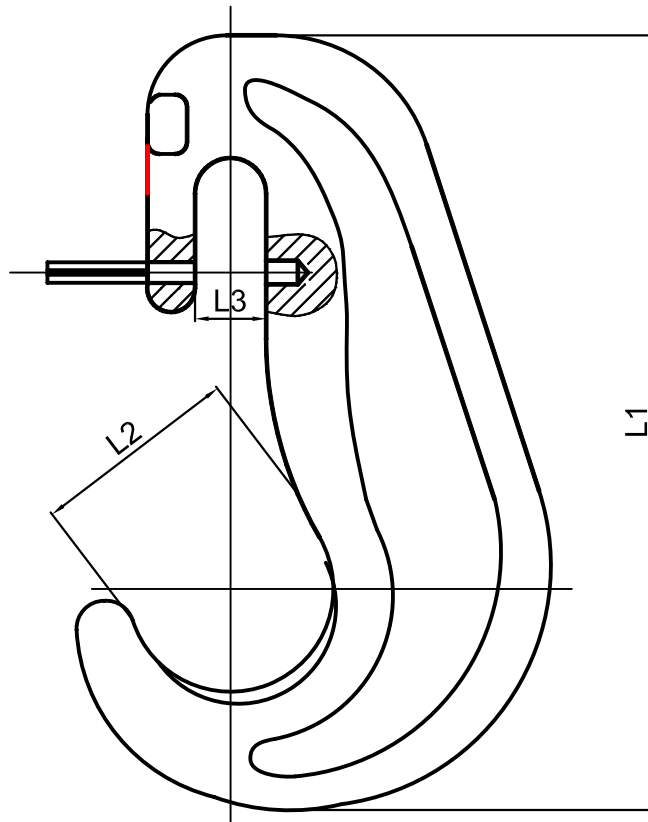
Application: For lashing general cargo cars, trailers and trucks

Materials: Nylon & high tensile steel

Remarks: Other lengths and materials upon request

MODEL NO.	SWL	B.L.	WEIGHT
CW-1	25KN	50KN	---

## C shape type H-13(11 / 9)C



### Specifications:

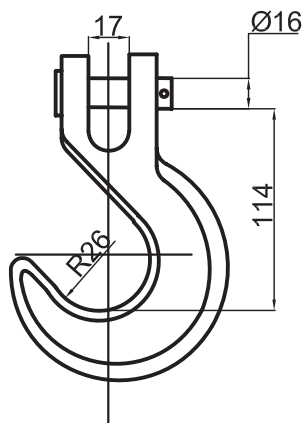
Classification: All items are approved by major classification societies

Materials: Forged steel

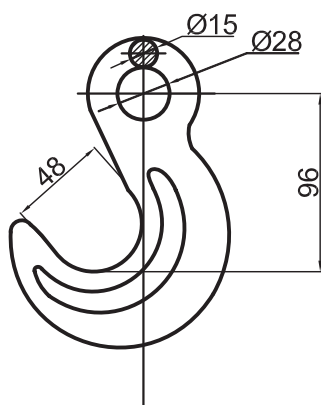
Finish: Painted

Remark: Other dimensions, materials and finish upon request

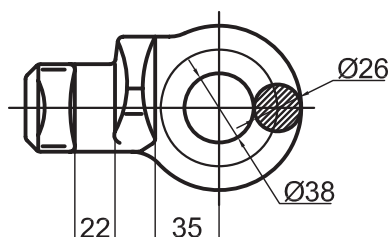
CHAIN DIA	MODEL NO.	L1	L2	L3	B.L.	WEIGHT
13mm	H-13C	196mm	52mm	18mm	200KN	1.3kg
11mm	H-11C	174mm	45mm	15mm	150KN	0.9kg
9mm	H-9C	152mm	38mm	12mm	100KN	0.5kg



**Clevis hook H-13**



**Eye hook H-13E**



**Securing pad H-13P**

### Specifications:

Classification: All items are approved by major classification societies

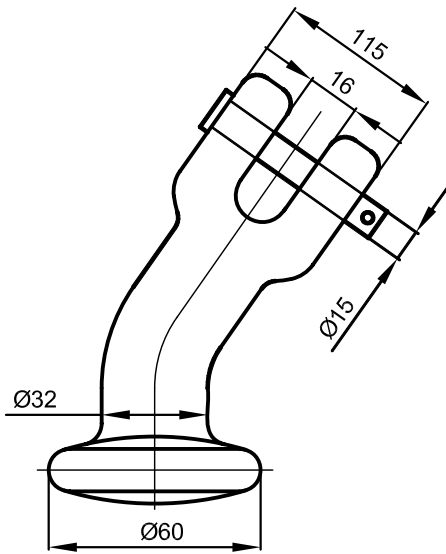
Materials: Forged steel

Finish: Painted

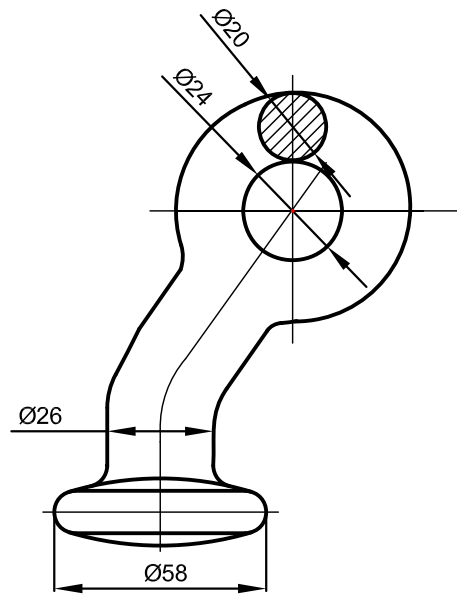
Remark: Other dimensions, materials and finish upon request

MODEL NO.	B.L.	WEIGHT
H-13	200KN	1.5kg
H-13E		1.2kg
H-13P		2.2kg

### Jaw type S-13



### Eye type S-13E



### Specifications:

Classification: All items are approved by major classification societies

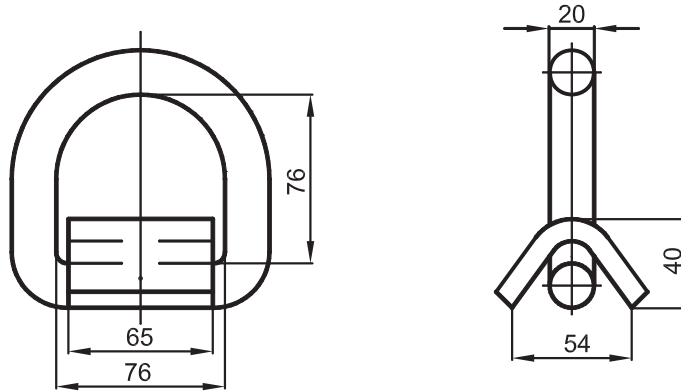
Materials: Forged & high tensile steel

Finish: Painted

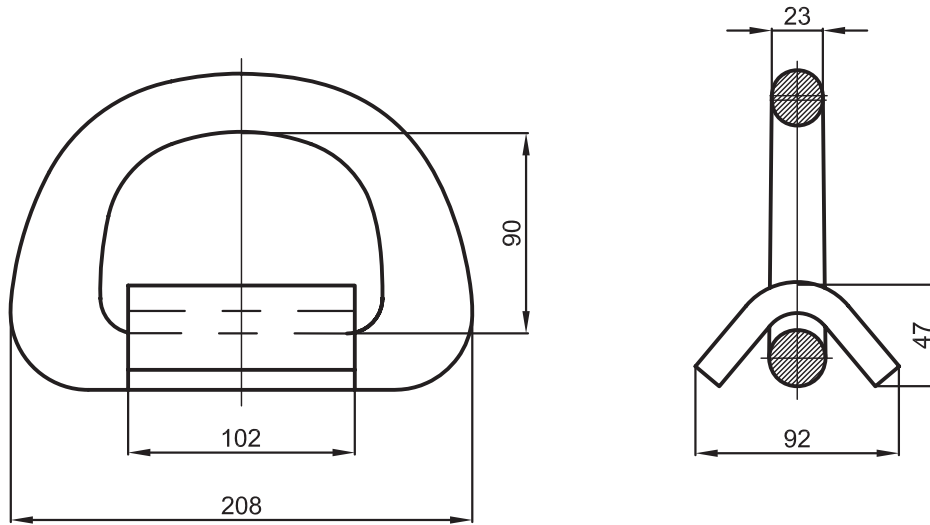
Remark: Other dimensions, materials and finish upon request

MODEL NO.	B.L.	WEIGHT
S-13	200KN	1.1kg
S-13E		0.8kg

### BL 20 Ton type DR-1/20



### BL 36 Ton type DR-1/36



#### Specifications:

Classification: All items are approved by major classification societies

Materials: Forged & high tensile steel

Finish: Primer

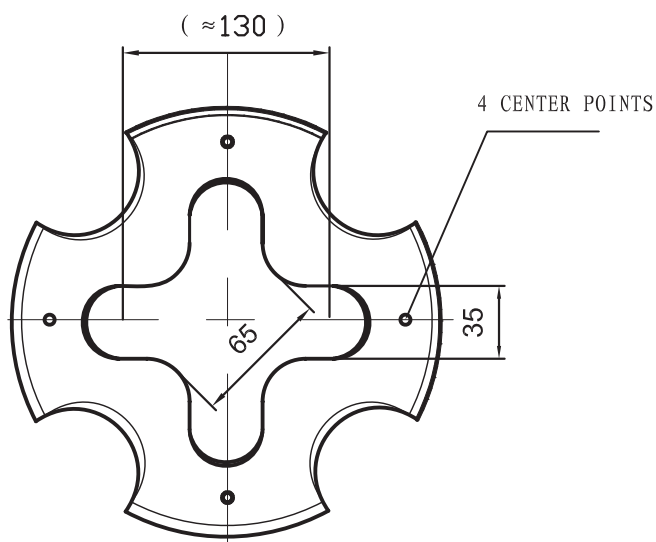
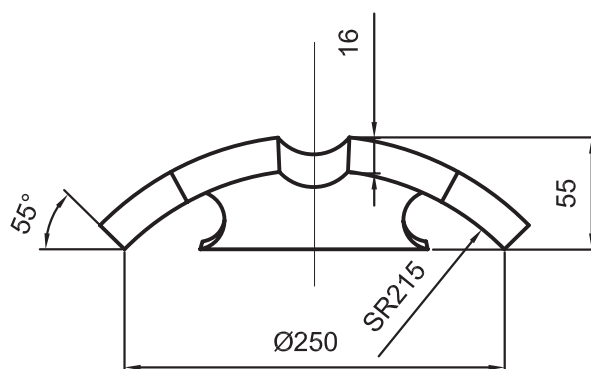
Remark: Other dimensions, materials and finish upon request

MODEL NO.	B.L.	WEIGHT
DR-1/20	196KN	1.2kg
DR-1/36	353KN	2.8kg

# RAISED CLOVERLEAF

LASHING MATERIALS FOR RO-RO VESSEL

## Raised Cloverleaf type FL-1



### Specifications:

Classification: All items are approved by major classification societies

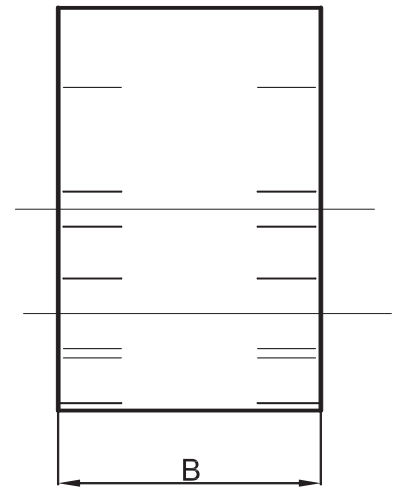
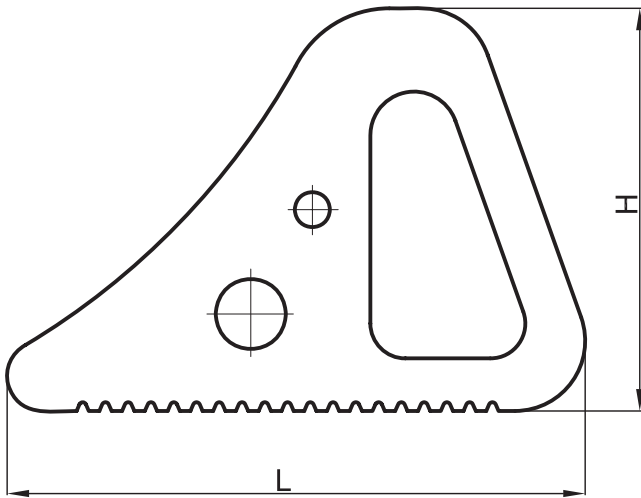
Materials: Mild steel

Finish: Primer

Remark: Other dimensions, materials and finish upon request

MODEL NO.	B.L.	WEIGHT
FL-1	200KN	4.7kg

### Wheel chocks type WHC



#### Specifications:

Application: WHC -1 wheel-stopper for trailers, trucks  
 WHC -2 wheel-stopper for cars

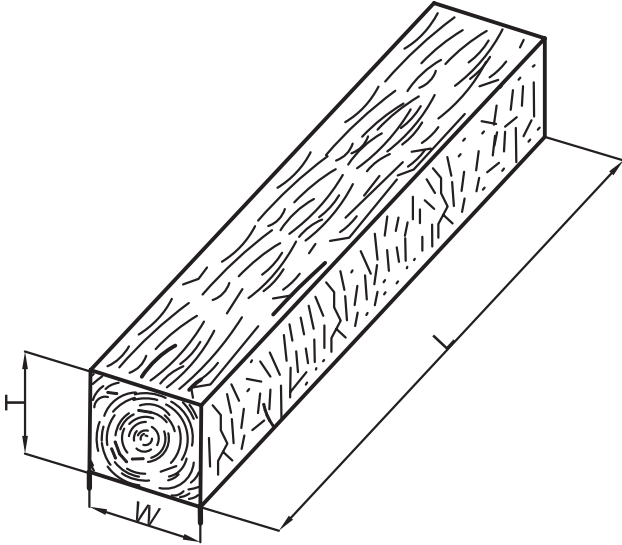
Materials: Rubber

Remark: Other lengths and materials upon request

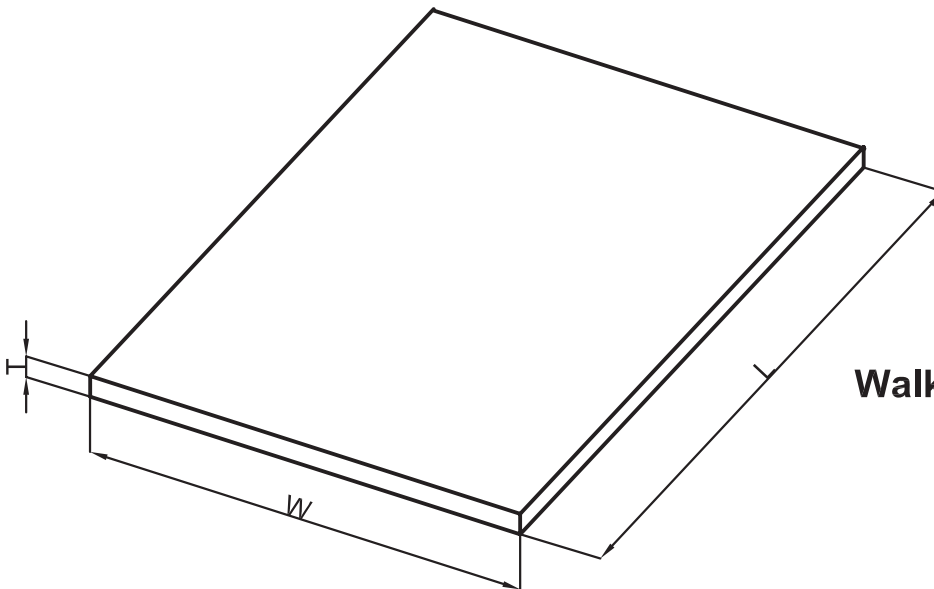
MODEL NO.	L	B	H	WEIGHT
WHC -1	300mm	160mm	190mm	5.2kg
WHC -2	170mm	90mm	100mm	0.7kg

# DUNNAGE WOOD

STORAGE MATERIALS FOR RO-RO VESSEL



**Dunnage Wood type W-1**



**Walking boards type W-5**

**Specifications:**

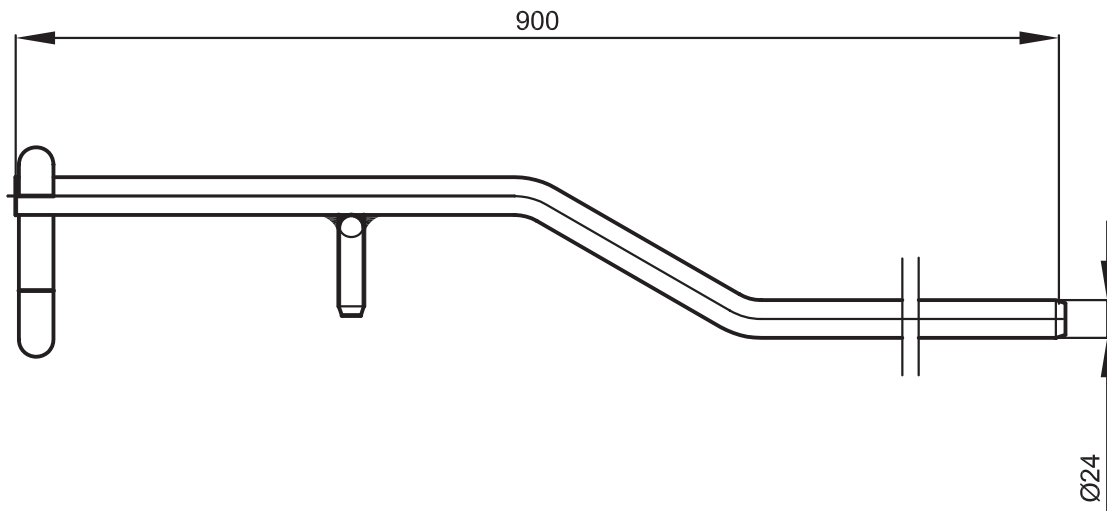
Application: For safety stowage of general cargo

Materials: Wood

Remark: Other dimensions and materials upon request

MODEL NO.	L	W	T
W-1 (2400X200X200)	2400mm	200mm	200mm
W-5 (2400X1200X9)	2400mm	1200mm	9mm

## Extension Handle ET-8



### Specifications:

Materials: High tensile steel

Finish: Painted

Remark: Other dimensions, materials and finish upon request

MODEL NO.	SWL	B.L.	WEIGHT
ET-8	--	--	4.8kg